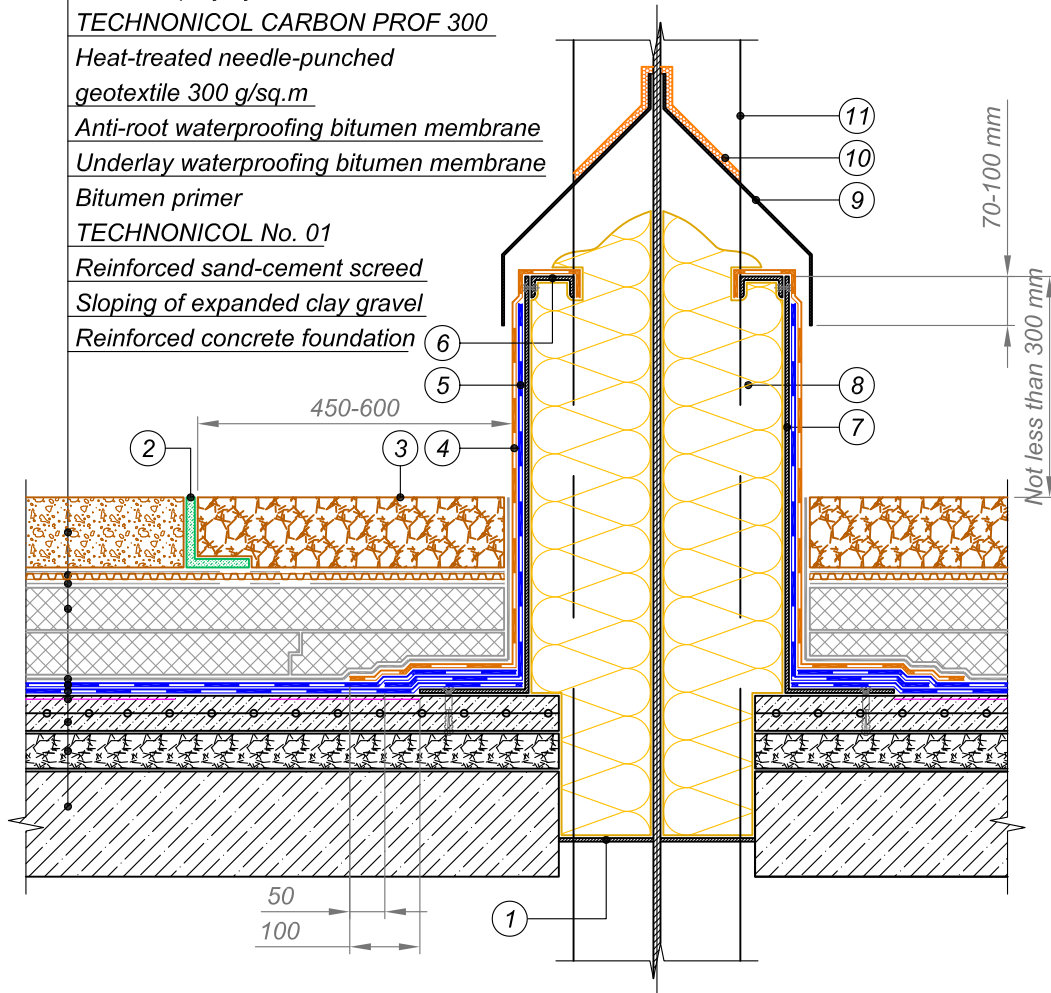




Plant substrate with green planting  
Drainage membrane with geotextile  
Heat-treated needle-punched geotextile 150 g/sq.m  
Extruded polystyrene  
TECHNONICOL CARBON PROF 300  
Heat-treated needle-punched geotextile 300 g/sq.m  
Anti-root waterproofing bitumen membrane  
Underlay waterproofing bitumen membrane  
Bitumen primer  
TECHNONICOL No. 01  
Reinforced sand-cement screed  
Sloping of expanded clay gravel  
Reinforced concrete foundation



- |   |  |
|---|--|
| <ul style="list-style-type: none"> <li>① Weld the metal plate and apply sealant around the perimeter</li> <li>② L-shaped plastic element</li> <li>③ Washed gravel</li> <li>④ Top layer of waterproofing system at junction - Cap sheet bitumen membrane</li> <li>⑤ Bottom layer of waterproofing system at junction - Underlay bitumen membrane</li> <li>⑥ Galvanized steel profile to be fastened by rivets</li> </ul> | <ul style="list-style-type: none"> <li>⑦ Galvanized steel duct not less than 3 mm in thickness</li> <li>⑧ Non-combustible thermal insulation</li> <li>⑨ Metal flashing not less than 3 mm in thickness should overlap the duct by 70-100 mm</li> <li>⑩ Weld flashing to the column and treat the joint with sealing mastic</li> <li>⑪ Rolled metal column</li> </ul> |
|---|--|

|      |      |             |         |   |         |          |
|------|------|-------------|---------|---|---------|----------|
|      |      |             |         | GREEN ROOF                                      | DESIGN  | APPROVED |
|      |      |             |         | ROLLED METAL COLUMN<br>PASSING THROUGH THE ROOF | SCALE   | DATE     |
| REV. | DATE | DESCRIPTION | CHECKED |   | DWG No. | REV.     |