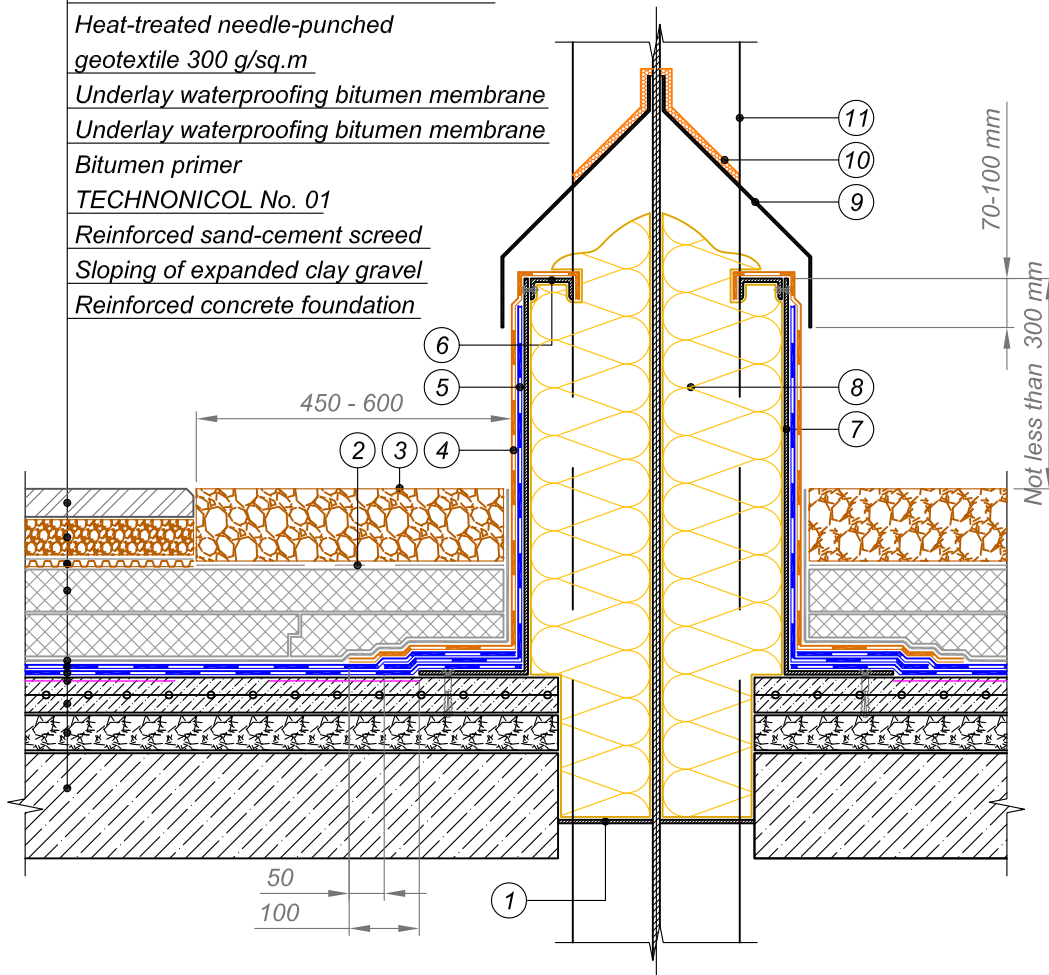




- Protective-decorative coating
- Washed gravel, fraction 2-5 mm
- Drainage membrane with geotextile
- Extruded polystyrene
- TECHNONICOL CARBON PROF 300
- Heat-treated needle-punched geotextile 300 g/sq.m
- Underlay waterproofing bitumen membrane
- Underlay waterproofing bitumen membrane
- Bitumen primer
- TECHNONICOL No. 01
- Reinforced sand-cement screed
- Sloping of expanded clay gravel
- Reinforced concrete foundation



- | | |
|--|--|
| <ul style="list-style-type: none"> ① Weld the metal plate and apply sealant around the perimeter ② Heat-treated needle-punched geotextile 150 g/sq.m ③ Washed gravel ④ Top layer of waterproofing system at junction - Cap sheet bitumen membrane ⑤ Bottom layer of waterproofing system at junction - Underlay bitumen membrane ⑥ Galvanized steel profile to be fastened by rivets | <ul style="list-style-type: none"> ⑦ Galvanized steel duct not less than 3 mm in thickness ⑧ Non-combustible thermal insulation ⑨ Metal flashing not less than 3 mm in thickness should overlap the duct by 70-100 mm ⑩ Weld flashing to the column and treat the joint with sealing mastic ⑪ Rolled metal column |
|--|--|

				TERRACE WITH DRAINAGE	
				DESIGN	APPROVED
				SCALE	DATE
REV.	DATE	DESCRIPTION	CHECKED	ROLLED METAL COLUMN PASSING THROUGH THE ROOF	
				DWG No.	REV.