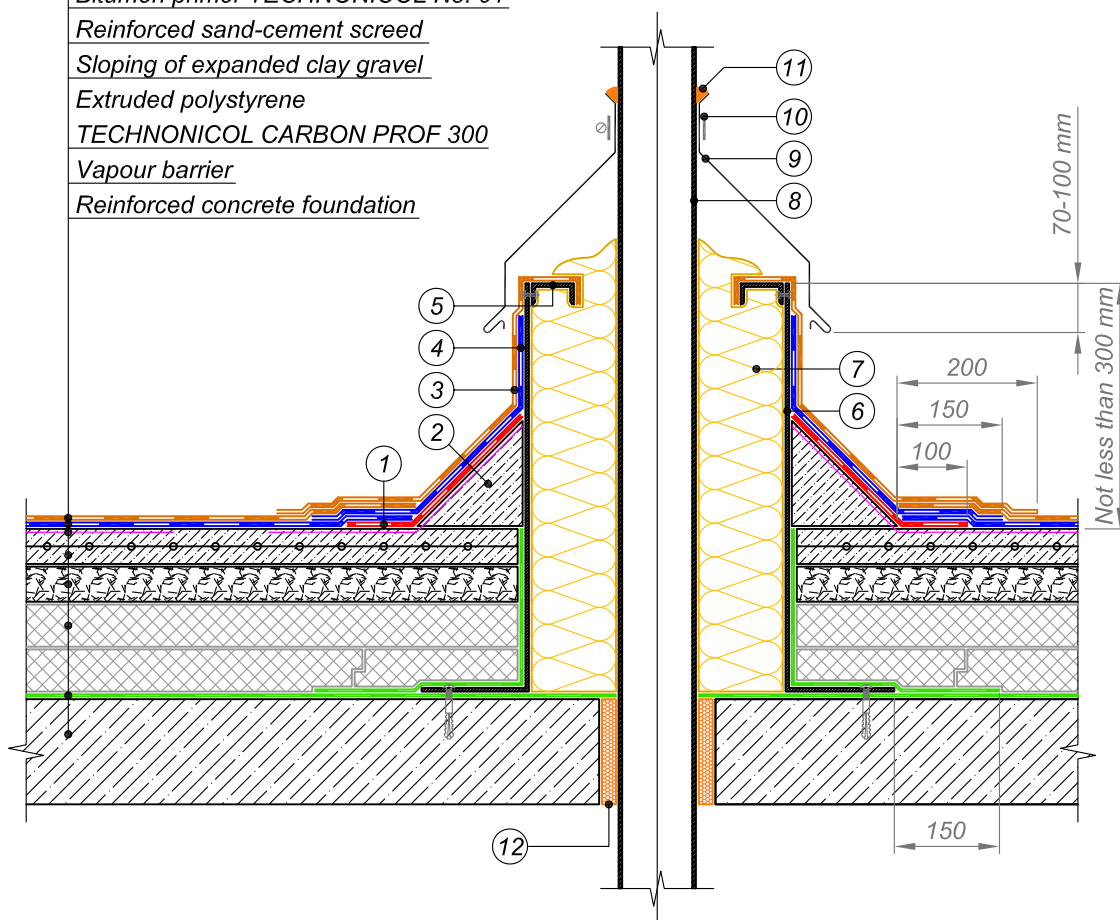




Cap sheet torch-on bitumen membrane
Underlay torch-on bitumen membrane
Bitumen primer TECHNOMICOL No. 01
Reinforced sand-cement screed
Sloping of expanded clay gravel
Extruded polystyrene
TECHNONICOL CARBON PROF 300
Vapour barrier
Reinforced concrete foundation



- | | |
|--|--|
| <p>① Additional layer of waterproofing membrane - Underlay bitumen membrane</p> <p>② Transitional upstand of lightweight concrete</p> <p>③ Top layer of waterproofing system on vertical surface - Cap sheet bitumen membrane</p> <p>④ Bottom layer of waterproofing system on vertical surface - Underlay bitumen membrane</p> <p>⑤ Galvanized steel profile to be fastened by rivets</p> | <p>⑥ Galvanized steel duct not less than 3 mm in thickness</p> <p>⑦ Stone wool thermal insulation not less than 120 mm in thickness</p> <p>⑧ Pipe</p> <p>⑨ Galvanized steel flashing</p> <p>⑩ Compression metal clamp</p> <p>⑪ Sealant *</p> <p>⑫ Sealing foam</p> |
|--|--|

NOTES

* Polyurethane sealant to be applied at temperatures up to 80°C.
 At high temperatures use specialized high-temperature sealants

				EXPOSED FLAT ROOF	DESIGN	APPROVED
				JUNCTION TO HOT PIPE VARIANT 1	SCALE	DATE
REV.	DATE	DESCRIPTION	CHECKED		DWG No.	REV.