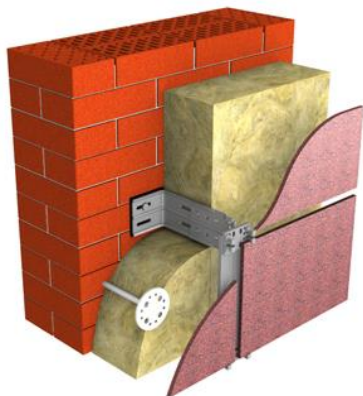




## TECHNOVENT STANDART

MW-EN 13162-T3-DS(70,-)-DS(23,90)-CS(10)40-TR15-PL(5)350-WS-WL(P)-MU1- RtF:A1

**TECHNOVENT STANDART - nonflammable, water-repellent thermal and sound insulation slabs of mineral wool based on basalt rocks.**



### Application areas:

TECHNOVENT STANDART slabs are designed to be used in industrial and civil construction as a heat- and sound insulating layer in ventilated facade systems.

### Description of material:

TECHNOVENT STANDART - nonflammable, water-repellent thermal and sound insulation slabs of mineral wool based on basalt rocks.

### Storage:

The slabs must be stored in covered warehouses. Storage under an awning protecting the slabs from atmospheric precipitation is permitted. The slabs shall be stored into containers or stacked on the pallets or on the supports during whole period of storage. The height of the stack shall not exceed 3 meters.

### Product technical data:

Essential characteristics	Performance	Harmonized technical specification
Declared thermal conductivity at 10 °C, $\lambda_D$ , W/m*K	0,035	EN 12667
Length, mm	$\pm 2/\pm 1,5$ %	EN 823
Width, mm	T4	EN 823
Thickness, (with increments of 10 mm), mm	30-200	EN 823
Deviation from squareness, mm/m	< 5	EN 824
Deviation from flatness, mm	< 6	EN 825
Compressive stress at 10% deformation, kPa	CS(10)10	EN 826
Tensile strength perpendicular to faces, kPa	TR5	EN 1607
Point Load, N	PL(5)100	EN 12430
Dimensional stability, %: -at specified temperature -under specified temperature (23°C) and humidity conditions (90%R.H.)	DS(70,-) <1 DS(23,90) <1	EN 1604
Reaction to fire, euroclass	A1	EN 13501-1
Water Absorption during Short/ Longterm Immersion kg/m <sup>2</sup>	WS <1 WL(P)<3	EN 1609 EN 12087