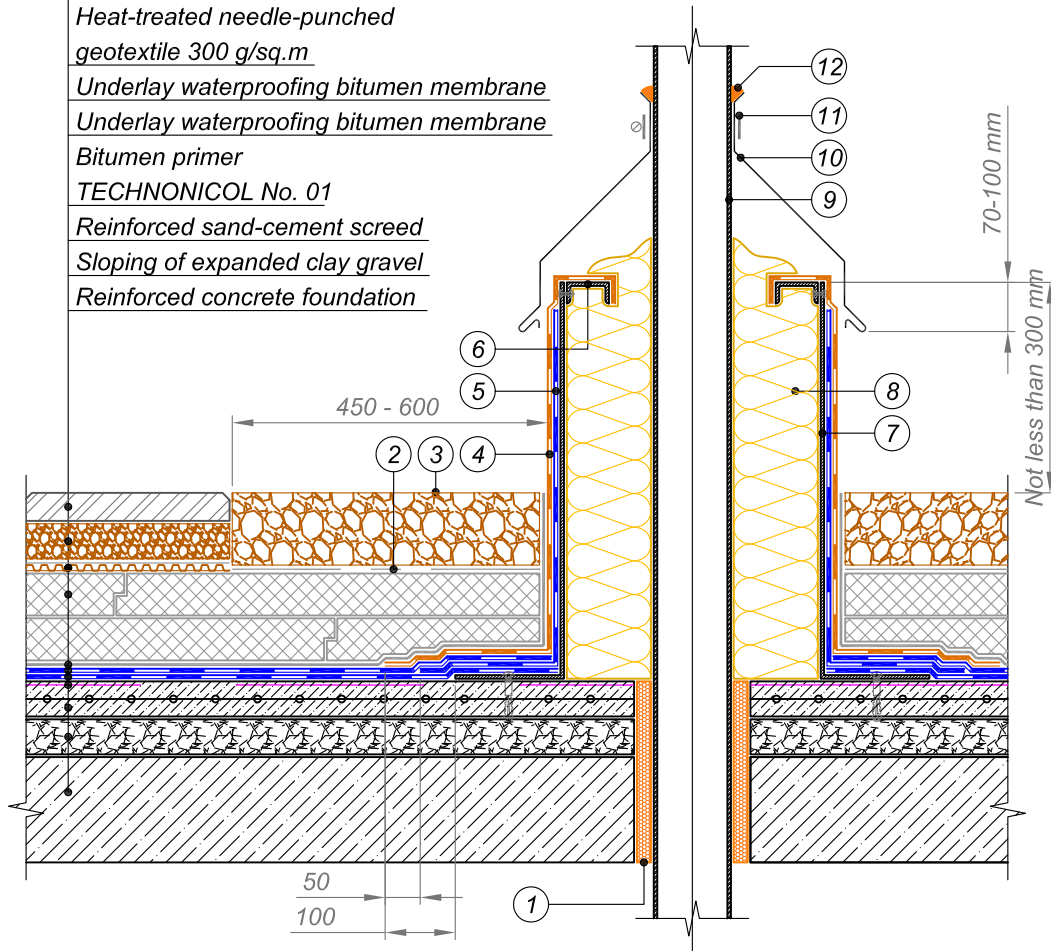




- Protective-decorative coating
- Washed gravel, fraction 2-5 mm
- Drainage membrane with geotextile
- Extruded polystyrene
- TECHNONICOL CARBON PROF 300
- Heat-treated needle-punched geotextile 300 g/sq.m
- Underlay waterproofing bitumen membrane
- Underlay waterproofing bitumen membrane
- Bitumen primer
- TECHNONICOL No. 01
- Reinforced sand-cement screed
- Sloping of expanded clay gravel
- Reinforced concrete foundation



- | | |
|--|---|
| <ul style="list-style-type: none"> ① Sealing foam ② Heat-treated needle-punched geotextile 150 g/sq.m ③ Washed gravel ④ Cap sheet bitumen membrane ⑤ Underlay bitumen membrane ⑥ Galvanized steel profile to be fastened by rivets | <ul style="list-style-type: none"> ⑦ Galvanized steel duct not less than 3 mm in thickness ⑧ Stone wool thermal insulation not less than 120 mm in thickness ⑨ Pipe ⑩ Galvanized steel flashing ⑪ Compression metal clamp ⑫ Sealant * |
|--|---|

NOTES

* Polyurethane sealant to be applied at temperatures up to 80°C.

At high temperatures use specialized high-temperature sealants.

				TERRACE WITH DRAINAGE	DESIGN	APPROVED
					SCALE	DATE
REV.	DATE	DESCRIPTION	CHECKED	JUNCTION TO HOT PIPE	DWG No.	REV.