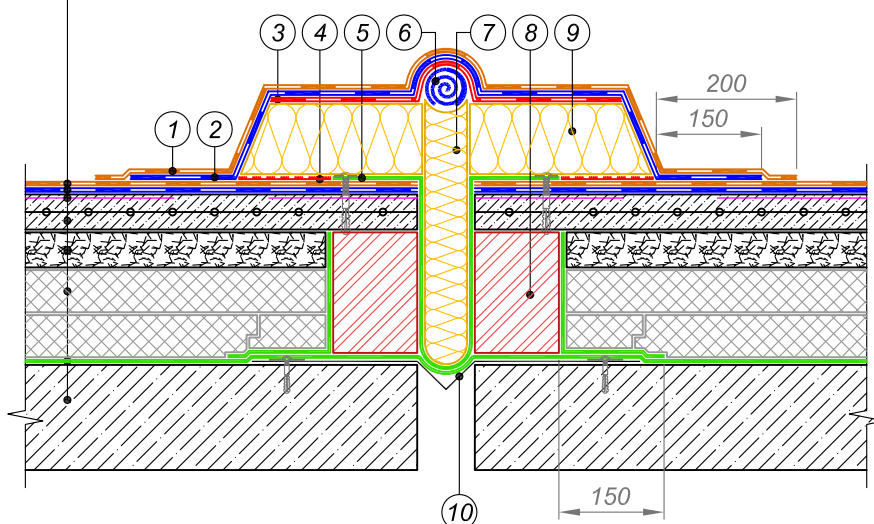


Cap sheet torch-on bitumen membrane
Underlay torch-on bitumen membrane
Bituminous primer TECHNOMICOL No. 01
Reinforced sand-cement screed
Sloping of expanded clay gravel
Extruded polystyrene
TECHNONICOL CARBON PROF 300
Vapour barrier
Reinforced concrete foundation



- | | |
|---|--|
| ① Cap sheet torch-on bitumen membrane | ⑥ Roofing material |
| ② Underlay torch-on bitumen membrane | in a roll Ø 50-70 mm |
| ③ Additional layer of waterproofing membrane -
Underlay bitumen membrane | ⑦ Compressible thermal insulation |
| ④ Stone wool thermal insulation to be glued
with hot roofing mastic | ⑧ Brickwork |
| ⑤ Vapour barrier for fixation of insulation | ⑨ Stone wool thermal insulation
100 mm in thickness |
| | ⑩ Metal compensator |

				EXPOSED FLAT ROOF	DESIGN	APPROVED
				EXPANSION JOINT VARIANT 1	SCALE	DATE
REV.	DATE	DESCRIPTION	CHECKED		DWG No.	REV.