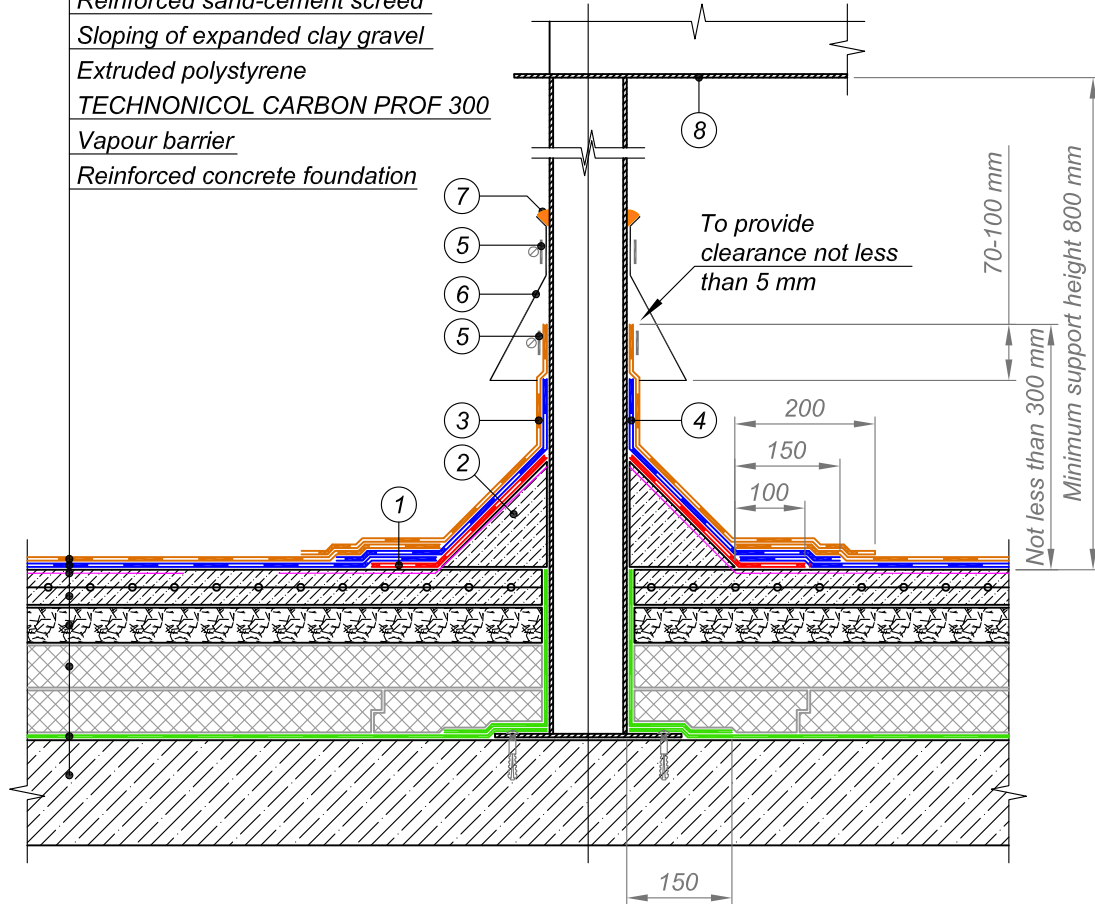




- Cap sheet torch-on bitumen membrane
- Underlay torch-on bitumen membrane
- Bitumen primer TECHNICAL No. 01
- Reinforced sand-cement screed
- Sloping of expanded clay gravel
- Extruded polystyrene
- TECHNONICOL CARBON PROF 300
- Vapour barrier
- Reinforced concrete foundation



- | | |
|--|---|
| <ul style="list-style-type: none"> ① Additional layer of waterproofing membrane - Underlay bitumen membrane ② Transitional upstand of lightweight concrete ③ Top layer of waterproofing system at junction - Cap sheet bitumen membrane | <ul style="list-style-type: none"> ④ Bottom layer of waterproofing system at junction - Underlay bitumen membrane ⑤ Compression metal clamp ⑥ Metal rain collar ⑦ Sealing mastic ⑧ Equipment support |
|--|---|

NOTES

Height of support above the roof surface should be not less than 800 mm to allow for possibility of roofing works and repairs.

				EXPOSED FLAT ROOF	DESIGN	APPROVED
					SCALE	DATE
REV.	DATE	DESCRIPTION	CHECKED	SUPPORT FOR EQUIPMENT	DWG No.	REV.