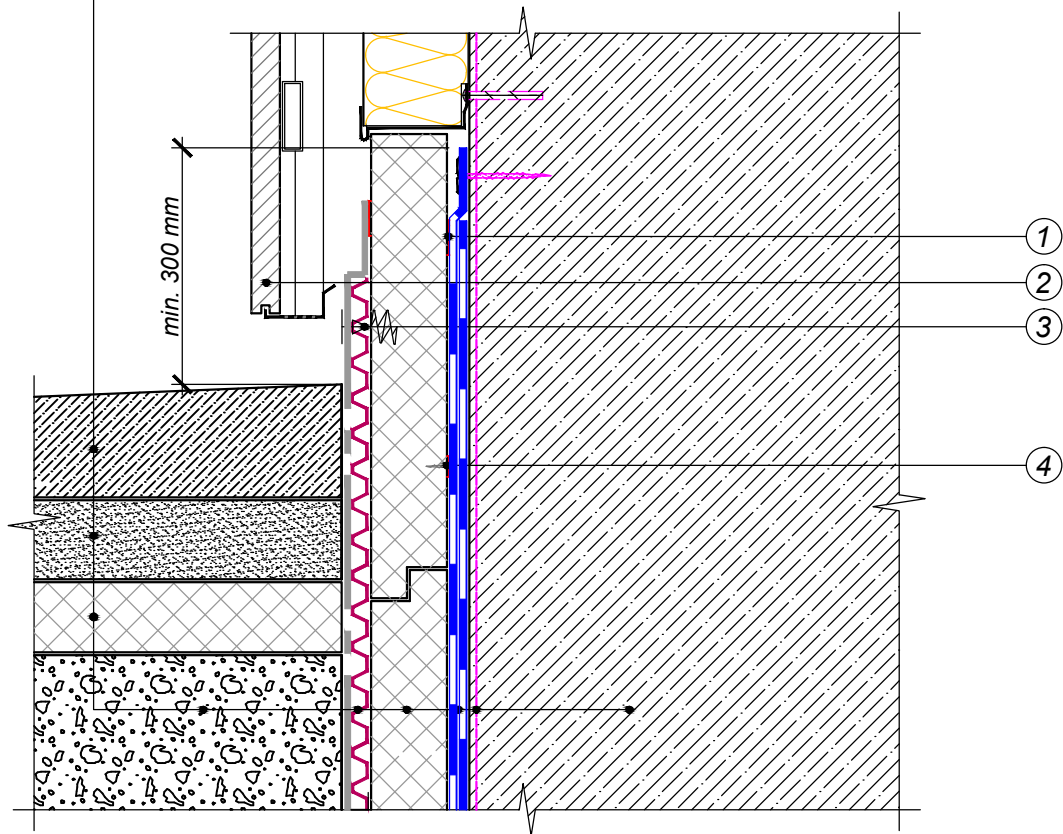




- Blind area structure
- Compacted leveling sand cushion
- Extruded polystyrene CARBON PROF 300
- Backfill soil
- Profiled drainage membrane with geotextile
- Extruded polystyrene CARBON PROF 300
- Underlay waterproofing bitumen membrane - 2 layers
- Bitumen primer TechnoNICOL No. 01
- Foundation wall



- ① Adhesive mastic
- ② Facade structure
- ③ Special screw with wide thread for fastening to polystyrene (screw length to be maximum thickness of thermal insulation minus 15mm)
- ④ Fasteners

				FOUNDATION WITH DRAINAGE	DESIGN	APPROVED
					SCALE	DATE
REV.	DATE	DESCRIPTION	CHECKED	PLINTH WALL CONSTRUCTION	DWG No.	REV.