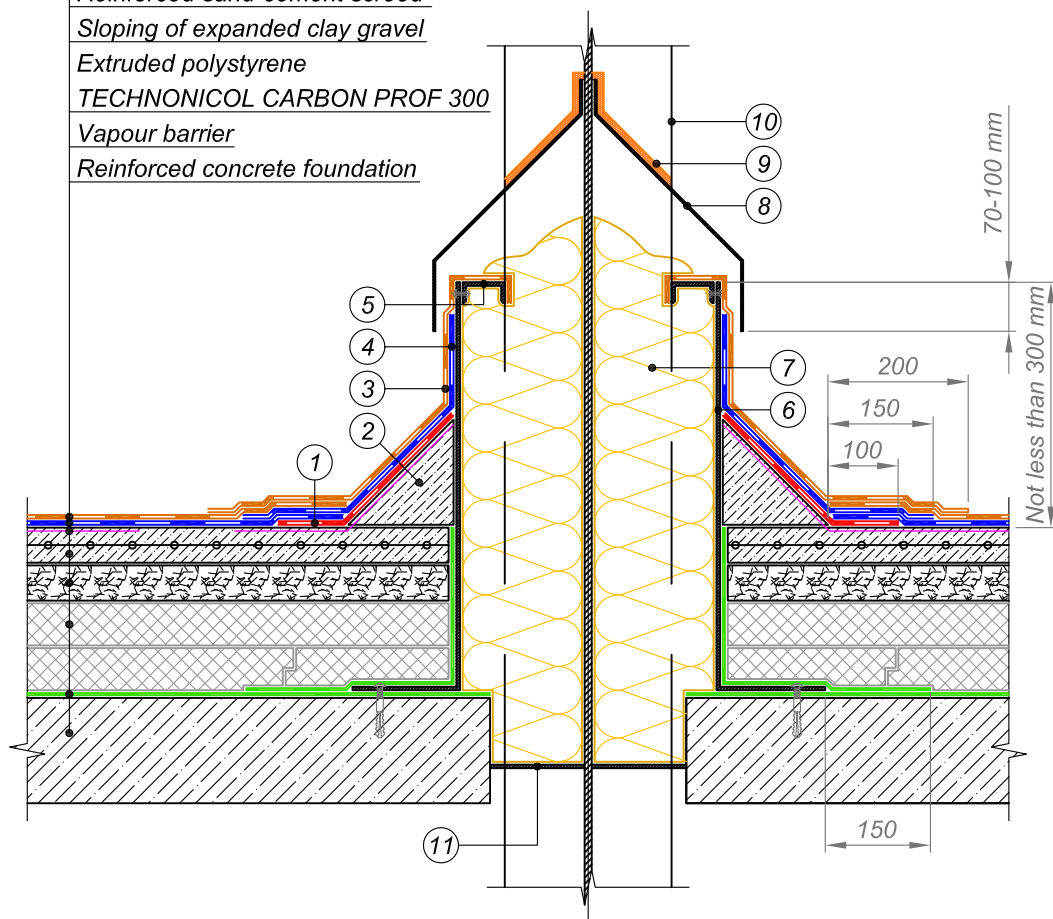




Cap sheet torch-on bitumen membrane
 Underlay torch-on bitumen membrane
 Bitumen primer TECHNICAL No. 01
 Reinforced sand-cement screed
 Sloping of expanded clay gravel
 Extruded polystyrene
 TECHNICAL CARBON PROF 300
 Vapour barrier
 Reinforced concrete foundation



- | | |
|--|--|
| <ul style="list-style-type: none"> ① Additional layer of waterproofing membrane - Underlay bitumen membrane ② Transitional upstand of lightweight concrete ③ Top layer of waterproofing system at junction - Cap sheet bitumen membrane ④ Bottom layer of waterproofing system at junction - Underlay bitumen membrane ⑤ Galvanized steel profile to be fastened by rivets ⑥ Galvanized steel duct not less than 3 mm in thickness | <ul style="list-style-type: none"> ⑦ Non-combustible thermal insulation ⑧ Metal flashing not less than 3 mm in thickness should overlap the duct by 70-100 mm ⑨ Weld flashing to the column and treat the joint with sealing mastic ⑩ Rolled metal column ⑪ Weld the metal plate and apply sealant around the perimeter |
|--|--|

EXPOSED FLAT ROOF				DESIGN	APPROVED
ROLLED METAL COLUMN PASSING THROUGH THE ROOF. VARIANT 1				SCALE	DATE
				REV.	DESCRIPTION