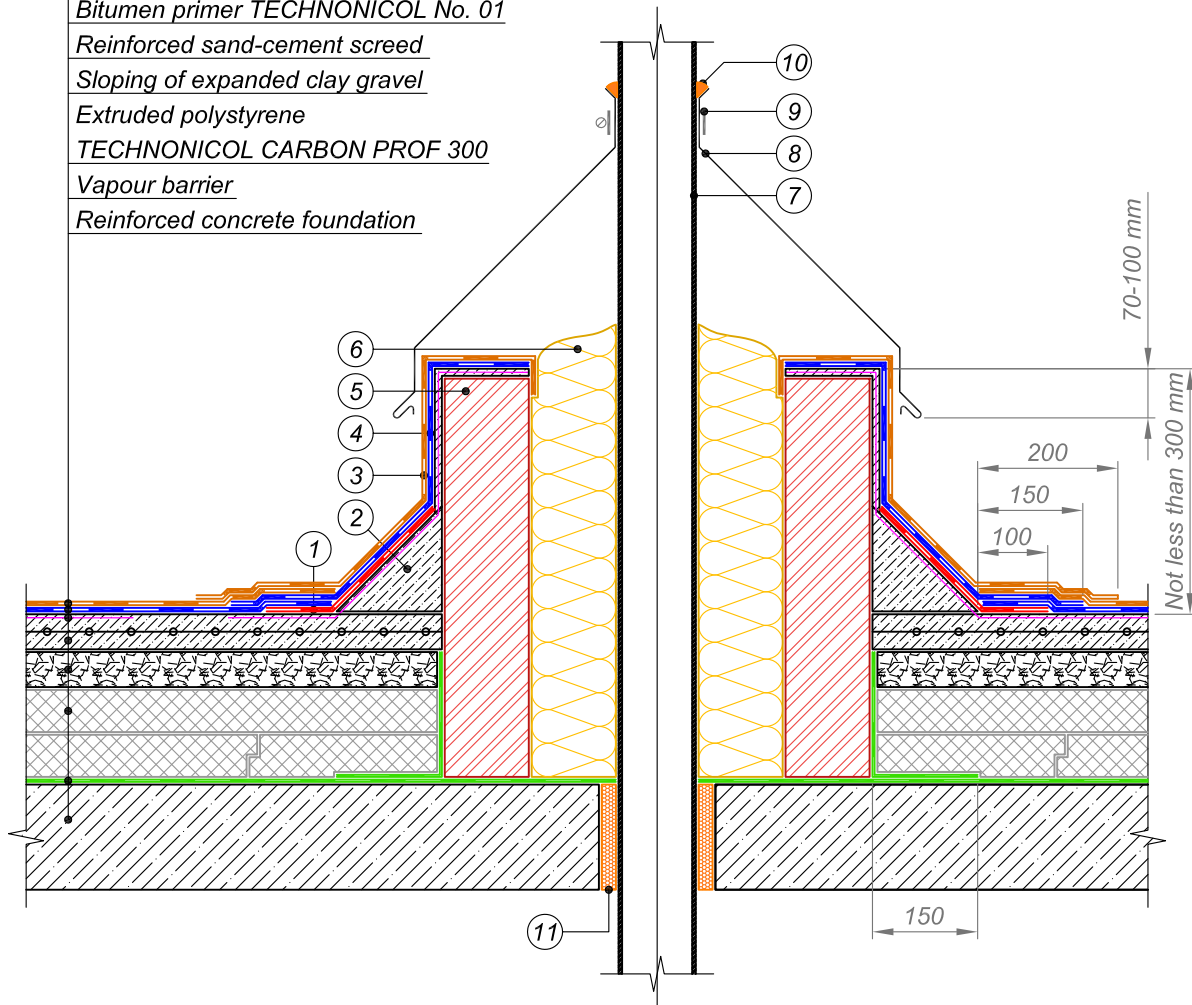




Cap sheet torch-on bitumen membrane  
Underlay torch-on bitumen membrane  
Bitumen primer TECHNICAL No. 01  
Reinforced sand-cement screed  
Sloping of expanded clay gravel  
Extruded polystyrene  
TECHNICAL CARBON PROF 300  
Vapour barrier  
Reinforced concrete foundation



- |   |   |
|---|---|
| <p>① Additional layer of waterproofing membrane - Underlay bitumen membrane</p> <p>② Transitional upstand of lightweight concrete</p> <p>③ Top layer of waterproofing system on vertical surface - Cap sheet bitumen membrane</p> <p>④ Bottom layer of waterproofing system on vertical surface - Underlay bitumen membrane</p> <p>⑤ Brickwork plastered with cement-sand grout</p> | <p>⑥ Stone wool thermal insulation not less than 120 mm in thickness</p> <p>⑦ Pipe</p> <p>⑧ Galvanized steel flashing</p> <p>⑨ Compression metal clamp</p> <p>⑩ Sealant *</p> <p>⑪ Sealing foam</p> |
|---|---|

**NOTES**

\* Polyurethane sealant to be applied at temperatures up to 80°C.  
 At high temperatures use specialized high-temperature sealants.

				EXPOSED FLAT ROOF	DESIGN	APPROVED
				JUNCTION TO HOT PIPE VARIANT 2	SCALE	DATE
REV.	DATE	DESCRIPTION	CHECKED		DWG No.	REV.